



Apply:
CB5 Health & Disease
+16 Exchange and transport Krebs cycle

Revision

Retrieval, keyword definitions and equation practice.

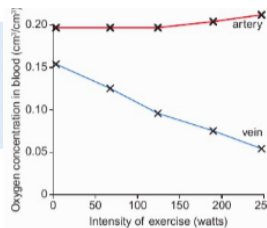
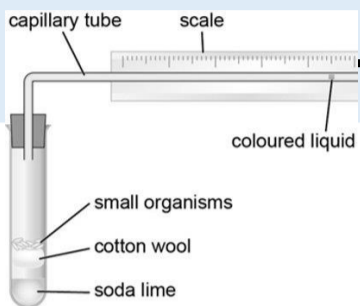
Final assessment



Review of learning

Respiration rates

Investigating the rate of respiration in living organisms

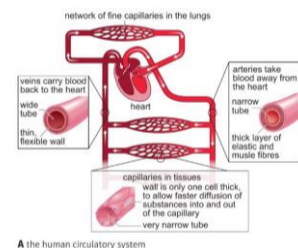
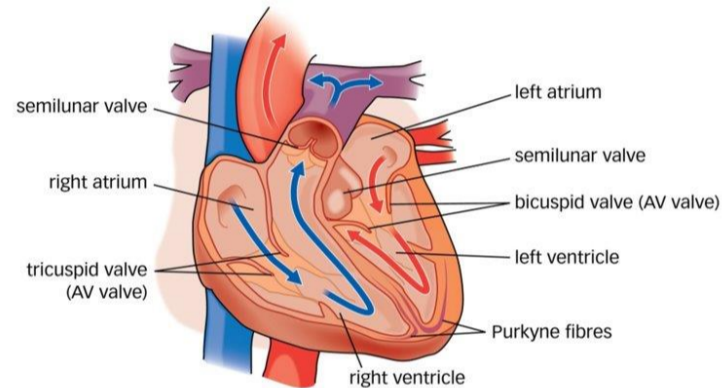
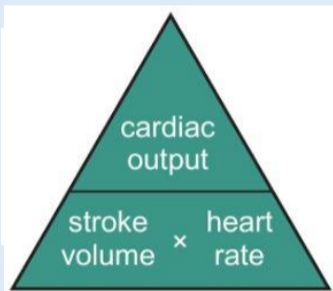


Cellular respiration

Comparing and contrasting aerobic and anaerobic respiration

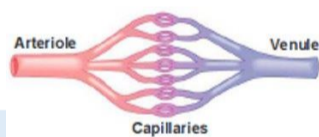
The Heart

Structures of the heart and their function



The circulatory system

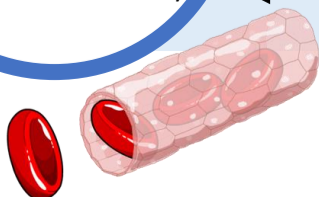
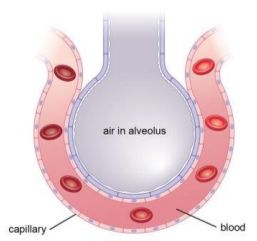
How the circulatory system works



Efficient transport and exchange

The efficient transport and exchange of substances in the body

LESSON 1



Retrieve:
B1.1 Cells
B1.2 Body systems – adaptations
B2.2 Respiration
B2.3 Adaptation and inheritance
B1 Key Biological Concepts
B5 Health & Disease

Make sure you can write definitions for these key terms.

Aerobic respiration, alveolus, antibody, erythrocyte, haemoglobin, lymphocyte, phagocyte, platelets, plasma, cardiac output, pulmonary artery, pulmonary vein, aorta, stroke volume, lactic acid

Key terms

