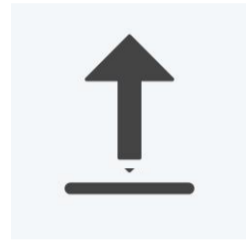


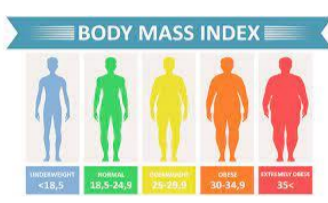


Final assessment
★
Review of learning

Apply:
CB1 Mitosis
CB2 Growth in animal and plant cells
CB2 Stem cells
CB3 Meiosis
CB6 Plant structures
CB8 Efficient transport and exchange
+16 Cell structure and function



Revision
Retrieval, keyword definitions and equation practice.



Type 2 diabetes
Explain cause of type 2 diabetes. Correlation between BMI and type 2 diabetes.

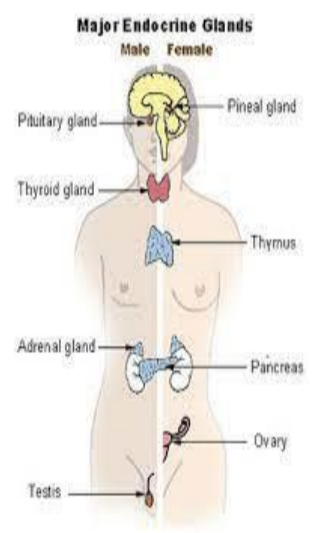
LESSON 6

Control of blood glucose
Explain importance of maintaining constant internal environment.

LESSON 5

Hormones and menstrual cycle
Explain interactions of hormones and the use of ART in IVF

LESSON 4



The menstrual cycle
Describe stages of the cycle, hormones involved and contraception to prevent unwanted pregnancy.

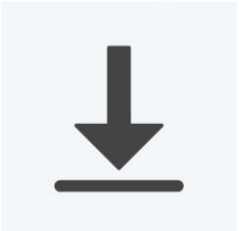
LESSON 3

Hormonal control of metabolic rate.
The use and Adrenaline and thyroxine in the body

LESSON 2

Hormones
Describe where hormones are produced.

Retrieve:
B1.1 Observing cells
B1.2 Plant and animal cells
B1.3 specialised cells
B1.4 Movement of substances
B2.1 Nutrients
B2.2 Food tests
B2.5 bacteria & enzymes



Make sure you can write definitions for these key terms.



Adrenal, pituitary gland, pancreas, thyroid, testes, ovaries, menstrual cycle, IVF, Clomifene therapy, diabetes, blood glucose, type 1, type 2, BMI